

B1297000-PH2/3000.01a/0007 C3

FOR CONTINUATION, SEE DRAWING NO. 0012

Reproduction from the Ordnance Survey Map with the permission of the controller of Her Majesty's Stationery Office Crown copyright reserved Licence No. AL 100017526

HILLCROFT FARM

SAFETY, HEALTH AND ENVIRONMENTAL INFORMATION

In addition to the hazards normally associated with the types of work detailed on this drawing, note the following:

CONSTRUCTION

Likelihood of fly-tipped hazardous substances Existing overhead and underground high voltage cables Working near overhead power lines at dormouse crossing point Working adjacent to a railway Working on slopes steeper than 1:3 Working near to site plant and other machinery

MAINTENANCE / CLEANING

Same as for construction

DECOMMISSIONING / DEMOLITION

Same as for construction It is assumed that all works will be carried out by a competent contractor working, where appropriate, to an approved method statement

NOTES

- 1. All dimensions in metres unless otherwise stated. 2. For complete fencing key, refer to fencing drawings.

KEY

Key symbols and descriptions for various planting types and site features, including High Forest, Wet Woodland Edge, Scattered Scrub, and various fence types.

Revision table with columns: Rev, Rev. Date, Purpose of revision, Drawn, Checkd, Rev'd, Apprv'd

JACOBS logo and contact information for the project.

Client and Project information including HOCHTIEF and TAYLOR WOODROW logos.

BEXHILL TO HASTINGS LINK ROAD

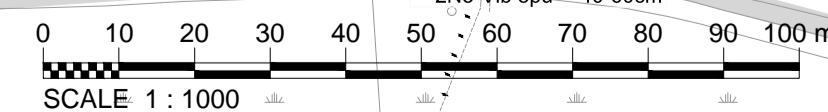
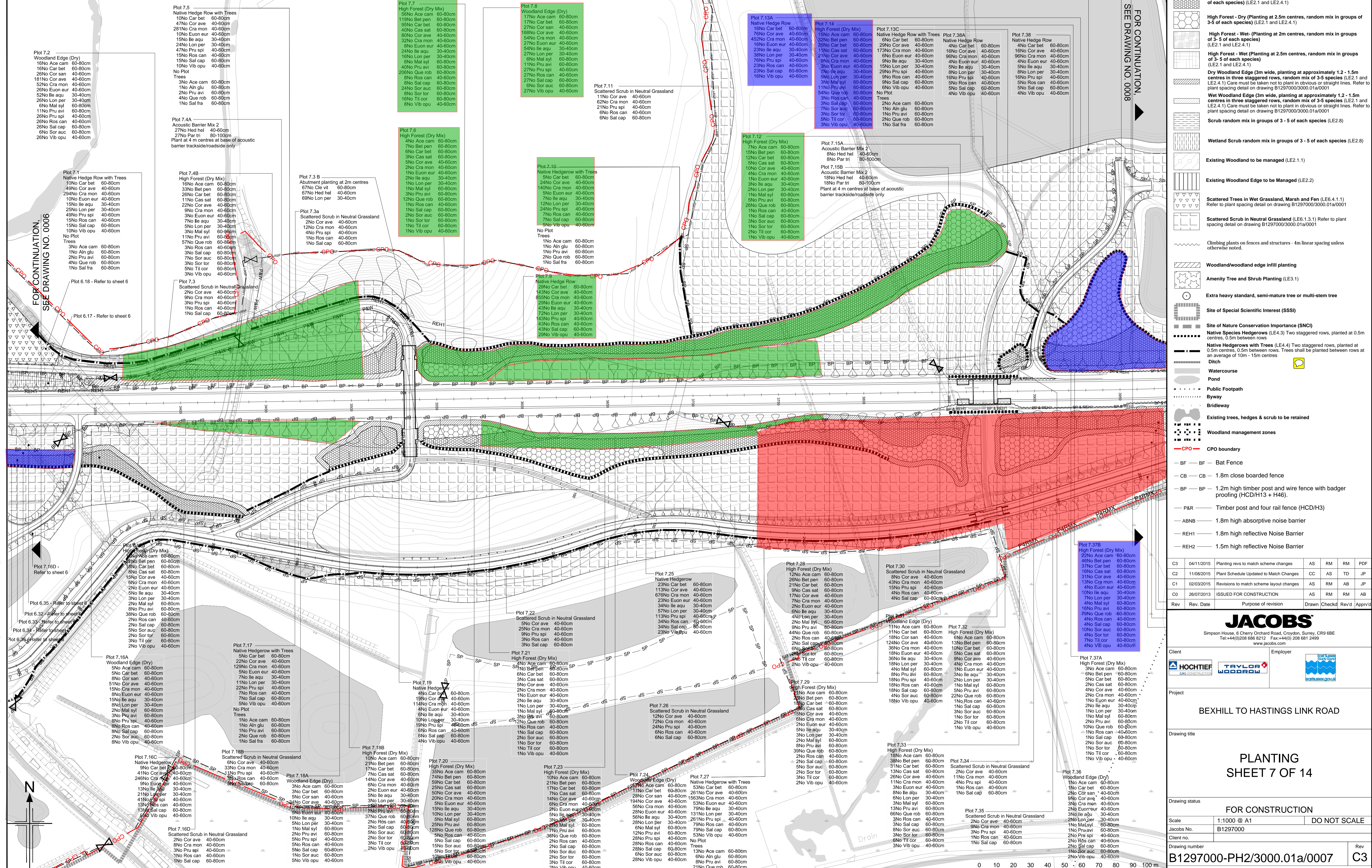
PLANTING SHEET 7 OF 14

FOR CONSTRUCTION

Scale and Drawing status table.

Drawing number B1297000-PH2/3000.01a/0007 C3

This drawing is not to be used in whole or part other than for the intended purpose and project as defined on this drawing. Refer to the contract for full terms and conditions.



P:\BTL\089\B1297000 Bexhill Hastings\Phase 2 - Detailed Design\600 CAD\603 Drawings\3000 Landscapes & Ecology